



IN-STOCK PROGRAM



CLASSIC PINPOINT

ULTRA FINE
80x80
PINPOINT OXFORD



112BSU-10
Button Down Collar, Placket Front,
Pocket, Barrel Cuff, Back Box Pleat



112BSU-40
Button Down Collar, Placket Front,
Pocket, Barrel Cuff, Back Box Pleat

REGULAR FIT SIZE SCALE

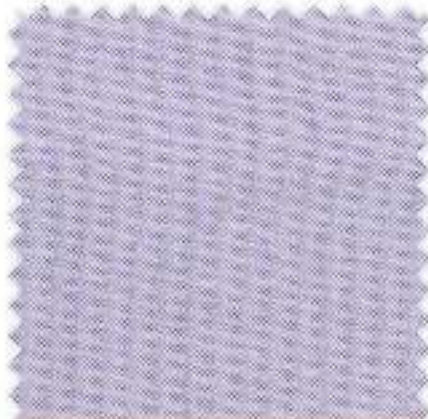
	14½	15	15½	16	16½	17	17½	18	18½
32	•	•	•	•	•				
33	•	•	•	•	•	•	•	•	
34		•	•	•	•	•	•	•	
35			•	•	•	•	•	•	•
36				•	•	•	•	•	•

EXTENDED SIZES SIZE SCALE

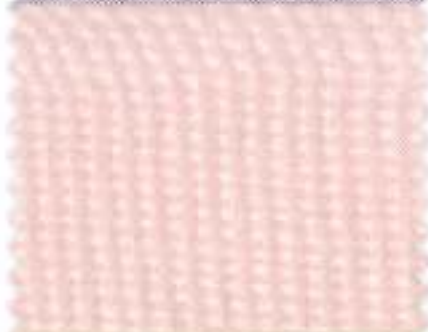
	15½	16	16½	17	17½	18	18½	19	20	22
34								B	B	B
35								B	B	B
36				T	T	T		T	T	T
37	T	T	T	T	T	T		T	T	T
38	T	T	T	T	T	T		T	T	T
40								T	T	T

"B" sizes are 3" fuller in the body than regular Gitman sizes.
"T" sizes are 3" taller than regular Gitman sizes.

ULTRA FINE
80x80
PINPOINT OXFORD



112BSU-61
Button Down Collar, Placket Front,
Pocket, Barrel Cuff, Back Box Pleat



112BSU-62
Button Down Collar, Placket Front,
Pocket, Barrel Cuff, Back Box Pleat



112BSU-78
Button Down Collar, Placket Front,
Pocket, Barrel Cuff, Back Box Pleat

REGULAR FIT SIZE SCALE

	14 ¹ / ₂	15	15 ¹ / ₂	16	16 ¹ / ₂	17	17 ¹ / ₂	18	18 ¹ / ₂
32	•	•	•	•	•				
33	•	•	•	•	•	•	•	•	
34		•	•	•	•	•	•	•	•
35			•	•	•	•	•	•	•
36			•	•	•	•	•	•	•

ULTRA FINE
80x80
PINPOINT OXFORD



110CH-10
Medium Spread Collar, Placket Front,
Pocket, Barrel Cuff, Shoulder Pleat



110CH-40
Medium Spread Collar, Placket Front,
Pocket, Barrel Cuff, Shoulder Pleat

REGULAR FIT SIZE SCALE

	14½	15	15½	16	16½	17	17½	18	18½
32	•	•	•	•	•				
33	•	•	•	•	•	•	•	•	•
34		•	•	•	•	•	•	•	•
35			•	•	•	•	•	•	•
36				•	•	•	•	•	•

EXTENDED SIZES SIZE SCALE

	15½	16	16½	17	17½	18	18½	19	20	22
34								B	B	B
35								B	B	B
36				T	T	T		T	T	T
37	T	T	T	T	T	T		T	T	T
38	T	T	T	T	T	T		T	T	T
40							T	T	T	T

"B" sizes are 3" fuller in the body than regular Gitman sizes.
"T" sizes are 3" taller than regular Gitman sizes.

ULTRA FINE
80x80
PINPOINT OXFORD



110M-10
Point Collar, Placket Front, Pocket,
Barrel Cuff, Shoulder Pleat



110M-40
Point Collar, Placket Front, Pocket,
Barrel Cuff, Shoulder Pleat



110MFC-10
Point Collar, Placket Front, Pocket,
French Cuff, Shoulder Pleat

REGULAR FIT SIZE SCALE

	14 ¹ / ₂	15	15 ¹ / ₂	16	16 ¹ / ₂	17	17 ¹ / ₂	18	18 ¹ / ₂
32	•	•	•	•	•				
33	•	•	•	•	•	•	•	•	
34		•	•	•	•	•	•	•	•
35			•	•	•	•	•	•	•
36				•	•	•	•	•	•

BUTTON-DOWN

CAMBRIDGE OXFORD
PURE COTTON



102BSU-10
Button Down Collar, Placket Front,
Pocket, Barrel Cuff, Back Box Pleat

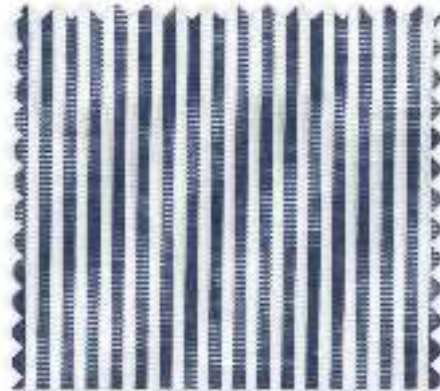
102BSU-40
Button Down Collar, Placket Front,
Pocket, Barrel Cuff, Back Box Pleat

119BSU-40
Button Down Collar, Placket Front,
Pocket, Barrel Cuff, Back Box Pleat

REGULAR FIT SIZE SCALE

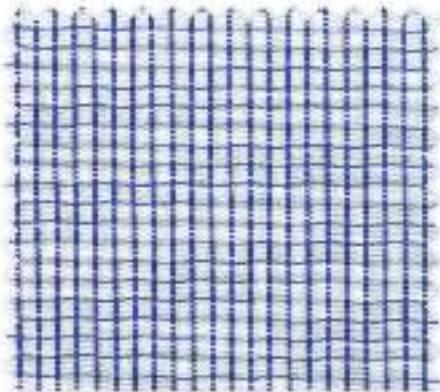
	14 ¹ / ₂	15	15 ¹ / ₂	16	16 ¹ / ₂	17	17 ¹ / ₂	18	18 ¹ / ₂
32	•	•	•	•	•				
33	•	•	•	•	•	•	•	•	
34		•	•	•	•	•	•	•	•
35			•	•	•	•	•	•	•
36				•	•	•	•	•	•

BENGAL STRIPE



209BSU-41
Button Down Collar, Placket Front,
Pocket, Barrel Cuff, Back Box Pleat

GRAPH CHECK

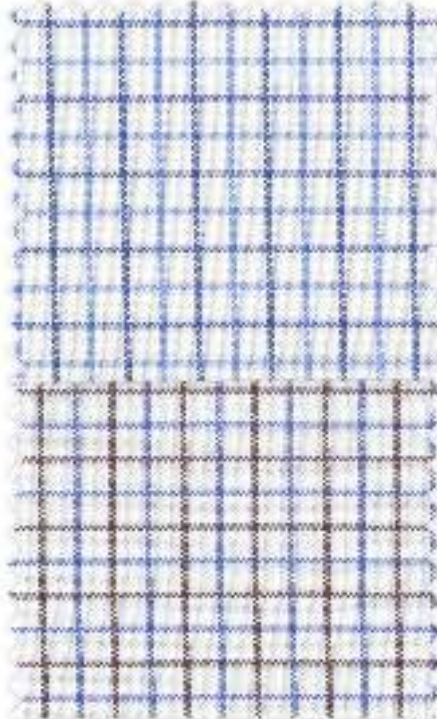


054BSU-41
Button Down Collar, Placket Front,
Pocket, Barrel Cuff, Back Box Pleat

REGULAR FIT SIZE SCALE

	14 ^{1/2}	15	15 ^{1/2}	16	16 ^{1/2}	17	17 ^{1/2}	18	18 ^{1/2}
32	•	•	•	•	•				
33	•	•	•	•	•	•	•	•	
34		•	•	•	•	•	•	•	•
35			•	•	•	•	•	•	•
36			•	•	•	•	•	•	•

**80's 2 PLY
PINPOINT OXFORD**



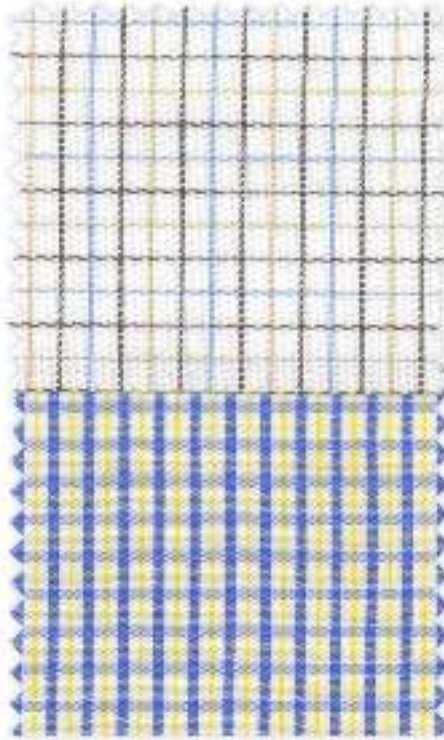
219BSU-40
Button Down Collar, Placket Front,
Pocket, Barrel Cuff, Back Box Pleat

219BSU-20
Button Down Collar, Placket Front,
Pocket, Barrel Cuff, Back Box Pleat

REGULAR FIT SIZE SCALE

	14 ^{1/2}	15	15 ^{1/2}	16	16 ^{1/2}	17	17 ^{1/2}	18	18 ^{1/2}
32	•	•	•	•	•				
33	•	•	•	•	•	•	•	•	
34		•	•	•	•	•	•	•	
35			•	•	•	•	•	•	•
36				•	•	•	•	•	•

70's SINGLE COMPACT



214BSU-27
Button Down Collar, Placket Front,
Pocket, Barrel Cuff, Back Box Pleat

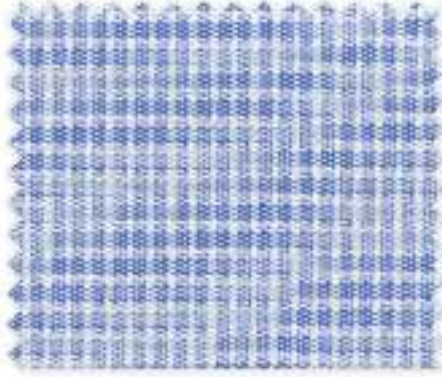
252BSU-73
Button Down Collar, Placket Front,
Pocket, Barrel Cuff, Back Box Pleat

REGULAR FIT SIZE SCALE

	14 ¹ / ₂	15	15 ¹ / ₂	16	16 ¹ / ₂	17	17 ¹ / ₂	18	18 ¹ / ₂
32	•	•	•	•	•				
33	•	•	•	•	•	•	•	•	
34		•	•	•	•	•	•	•	
35			•	•	•	•	•	•	•
36				•	•	•	•	•	•

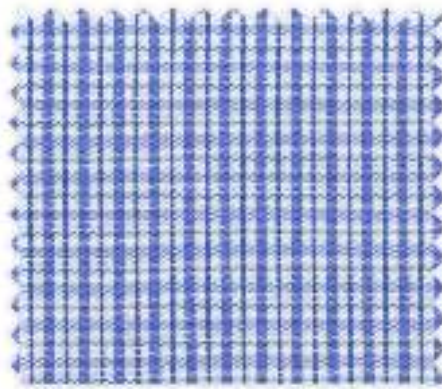
MEDIUM SPREAD COLLAR

MINI WINDOWPANE



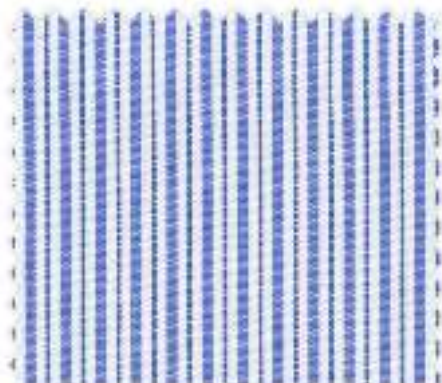
213CH-40
Medium Spread Collar, Placket Front,
Pocket, Barrel Cuff, Shoulder Pleat

MULTI TATTERSALL



252CH-40
Medium Spread Collar, Placket Front,
Pocket, Barrel Cuff, Shoulder Pleat

MULTI STRIPE

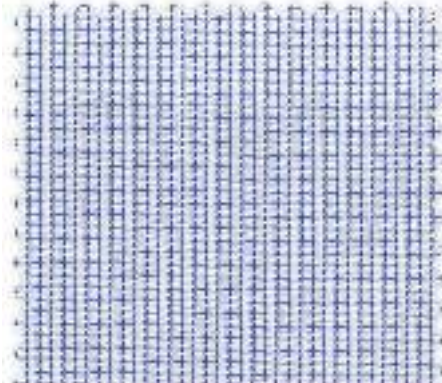


253CH-40
Medium Spread Collar, Placket Front,
Pocket, Barrel Cuff, Shoulder Pleat

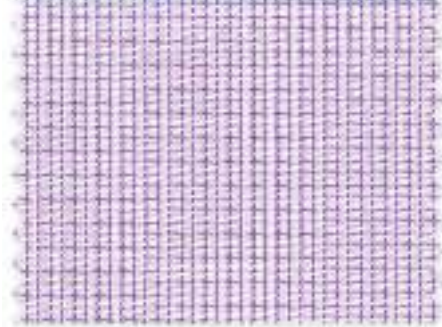
REGULAR FIT SIZE SCALE

	14 ¹ / ₂	15	15 ¹ / ₂	16	16 ¹ / ₂	17	17 ¹ / ₂	18	18 ¹ / ₂
32	•	•	•	•	•				
33	•	•	•	•	•	•	•	•	
34		•	•	•	•	•	•	•	•
35			•	•	•	•	•	•	•
36				•	•	•	•	•	•

MINI GRAPH CHECK



211CH-40
Medium Spread Collar, Placket Front,
Pocket, Barrel Cuff, Shoulder Pleat



211CH-61
Medium Spread Collar, Placket Front,
Pocket, Barrel Cuff, Shoulder Pleat

CLASSIC GINGHAM



210CH-41
Medium Spread Collar, Placket Front,
Pocket, Barrel Cuff, Shoulder Pleat

REGULAR FIT SIZE SCALE

	14 ¹ / ₂	15	15 ¹ / ₂	16	16 ¹ / ₂	17	17 ¹ / ₂	18	18 ¹ / ₂
32	•	•	•	•	•				
33	•	•	•	•	•	•	•	•	
34		•	•	•	•	•	•	•	
35			•	•	•	•	•	•	•
36				•	•	•	•	•	•

WIDE SPREAD

COVERT TWILL



215WSD-10
Wide Spread Collar, French Front, No
Pocket, Mitered Cuff, Shoulder Pleat

TIC WEAVE



225WSD-40
Wide Spread Collar, French Front, No
Pocket, Mitered Cuff, Shoulder Pleat

REGULAR FIT SIZE SCALE

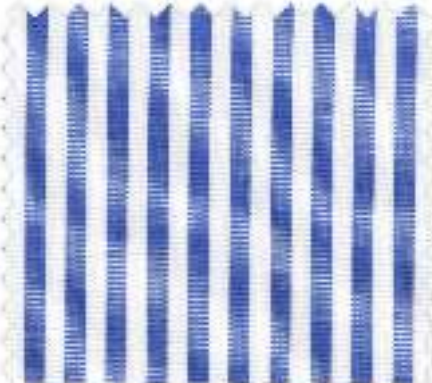
	14 ^{1/2}	15	15 ^{1/2}	16	16 ^{1/2}	17	17 ^{1/2}	18	18 ^{1/2}
32	•	•	•	•	•				
33	•	•	•	•	•	•	•	•	
34		•	•	•	•	•	•	•	
35			•	•	•	•	•	•	•
36				•	•	•	•	•	•

MINI GINGHAM



223WSNT-42
Wide Spread Collar, Placket Front, No
Pocket, Mitered Cuff, Shoulder Pleat

WIDE BENGAL



224WSNT-40
Wide Spread Collar, Placket Front, No
Pocket, Mitered Cuff, Shoulder Pleat

REGULAR FIT SIZE SCALE

	14 ¹ / ₂	15	15 ¹ / ₂	16	16 ¹ / ₂	17	17 ¹ / ₂	18	18 ¹ / ₂
32	•	•	•	•	•				
33	•	•	•	•	•	•	•	•	
34		•	•	•	•	•	•	•	•
35			•	•	•	•	•	•	•
36				•	•	•	•	•	•

MX2

TAILORED FIT



- Higher Stance, Wide Spread Collar
- Accent Royal Blue Thread On Collar Button Hole
- 3" Trimmer Than Regular Gitman Fit Chest and Waist
- French Front with No Pocket
- Mitered Cuff



- Higher Stance, Wide Spread Collar
- Accent Royal Blue Thread On Collar Button Hole



- French Front
- Mitered Cuff

TAILORED FIT "MX2" SIZE SCALE

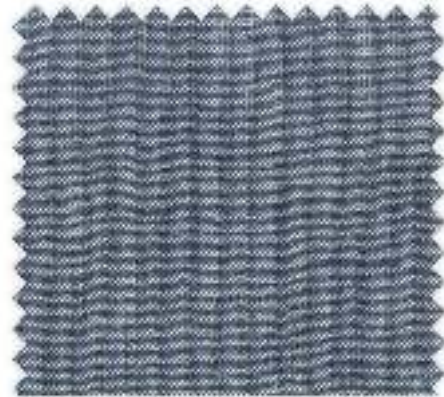
	14 ¹ / ₂	15	15 ¹ / ₂	16	16 ¹ / ₂	17	17 ¹ / ₂	18
32		•	•					
33	•	•	•	•	•	•		
34		•	•	•	•	•	•	•
35			•	•	•	•	•	•
36				•	•	•	•	•

100's 2 PLY PINPOINT



325MX2-10
High Stance Wide Spread Collar,
French Front, No Pocket, Mitered
Cuff, Shoulder Pleat

**AUTHENTIC WORK
CHAMBRAY**



217MX2-41
High Stance Wide Spread Collar,
French Front, No Pocket, Mitered
Cuff, Shoulder Pleat

BENGAL STRIPE

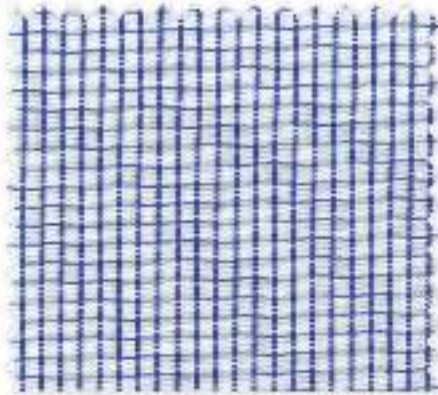


209MX2-41
High Stance Wide Spread Collar,
French Front, No Pocket, Mitered
Cuff, Shoulder Pleat

TAILORED FIT "MX2" SIZE SCALE

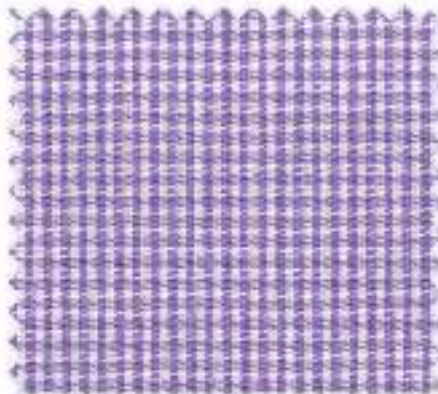
	14 ¹ / ₂	15	15 ¹ / ₂	16	16 ¹ / ₂	17	17 ¹ / ₂	18
32		•	•					
33	•	•	•	•	•	•		
34		•	•	•	•	•	•	•
35			•	•	•	•	•	•
36				•	•	•	•	•

GRAPH CHECK



054MX2-41
High Stance Wide Spread Collar,
French Front, No Pocket, Mitered
Cuff, Shoulder Pleat

MINI GINGHAM



232MX2-61
High Stance Wide Spread Collar,
French Front, No Pocket, Mitered
Cuff, Shoulder Pleat

CLASSIC GINGHAM



210MX2-41
High Stance Wide Spread Collar,
French Front, No Pocket, Mitered
Cuff, Shoulder Pleat

TAILORED FIT "MX2" SIZE SCALE

	14 ¹ / ₂	15	15 ¹ / ₂	16	16 ¹ / ₂	17	17 ¹ / ₂	18
32		•	•					
33	•	•	•	•	•	•		
34		•	•	•	•	•	•	•
35			•	•	•	•	•	•
36				•	•	•	•	•

NATURAL STRETCH

The natural stretch is an 80's two ply Egyptian all cotton construction. The cotton yarn undergoes a crimping process (like fine woolen) that allows it to expand and constrict naturally. The net result is a fine all cotton construction that has just enough stretch properties to take a needle consistently. The fabric is remarkably comfortable, breathes well and is comfortable to the touch and to wear. It drapes beautifully, actually better than a regular all cotton shirt. The fabrication works well as a tailored fit because it moves with you. It makes a great travel shirt.



204MX2-10
High Stance Wide Spread Collar,
French Front, No Pocket, Mitered
Cuff, Shoulder Pleat

204MX2-40
High Stance Wide Spread Collar,
French Front, No Pocket, Mitered
Cuff, Shoulder Pleat

TAILORED FIT "MX2" SIZE SCALE

	14 ¹ / ₂	15	15 ¹ / ₂	16	16 ¹ / ₂	17	17 ¹ / ₂	18
32		•	•					
33	•	•	•	•	•	•		
34		•	•	•	•	•	•	•
35			•	•	•	•	•	•
36				•	•	•	•	•

WHITE TIE FULL DRESS ACCESSORIES

107PFWB 10 – Full Dress Shirt, Edge Stitch Wing Tip Collar, Bib Front, No Pocket, Square Cuff, Shoulder Pleat

64V-01 – Full Dress Vest

64BB-01 – Full Dress Self Tie Bow



**107PFWB 10
REGULAR SIZES**

	14 ^{1/2}	15	15 ^{1/2}	16	16 ^{1/2}	17	17 ^{1/2}	18	18 ^{1/2}
32	•	•	•	•	•				
33	•	•	•	•	•	•	•	•	•
34		•	•	•	•	•	•	•	•
35			•	•	•	•	•	•	•
36				•	•	•	•	•	•

**64V-01
White Pique Backless Vest**

S	M	L	XL	XXL
38-40	40-42	44-46	46-48	50-52

**64BB-01
Self Tie Butterfly Bow**

- Regular Bow fits up to a 17" finished collar
- Large Bow fits up to a 22" finished collar

FORMAL STORY

From a casualized formal pinpoint shirt to white tie full dress, from hand pleated cummerbunds, to four-in-hand satin hand made ties, Gitman is the home of authentic, "Made in the USA", formal accessories.





129FCH5-10

- Spread Collar
- 2-Ply Broadcloth
- 5 Pleat Formal Shirt
- Smoke Pearl Buttons on Tape for Stud use
- Bow/CB set: **52FS-600**



128FMT-10

- Classic Spread Collar
- 2-Ply Broadcloth
- 10 Pleat Formal Shirt
- Buttons on Tape for Stud use
- Bow #: **51BB-001**



222MXBB-10

- Higher Stance, Wide Collar
- 2-Ply Broadcloth with Diamond Weave Bib
- Mitered French Cuff
- Smoke Pearl Buttons on Tape for Stud use
- **Tailored fit**

EXTENDED SIZES SIZE SCALE
(For 129FCH5-10 Only)

	15 ¹ / ₂	16	16 ¹ / ₂	17	17 ¹ / ₂	18	18 ¹ / ₂	19	20	22
34								B	B	B
35								B	B	B
36				T	T	T		T	T	T
37	T	T	T	T	T			T	T	T
38	T	T	T	T	T			T	T	T
40				T				T	T	T

REGULAR SIZES

	14 ¹ / ₂	15	15 ¹ / ₂	16	16 ¹ / ₂	17	17 ¹ / ₂	18	18 ¹ / ₂
32	•	•	•	•	•				
33	•	•	•	•	•	•	•	•	•
34	•	•	•	•	•	•	•	•	•
35		•	•	•	•	•	•	•	•
36		•	•	•	•	•	•	•	•

TAILORED FIT "MX2" SIZE SCALE
(For 222MXBB-10 Only)

	15	15 ¹ / ₂	16	16 ¹ / ₂	17	17 ¹ / ₂	18
32	•	•					
33	•	•	•	•	•	•	•
34	•	•	•	•	•	•	•
35	•	•	•	•	•	•	•
36		•	•	•	•	•	•

"B" sizes are 3" fuller in the body than regular Gitman sizes.
"T" sizes are 3" taller than regular Gitman sizes.

GITMAN BROS.
EST. 1978

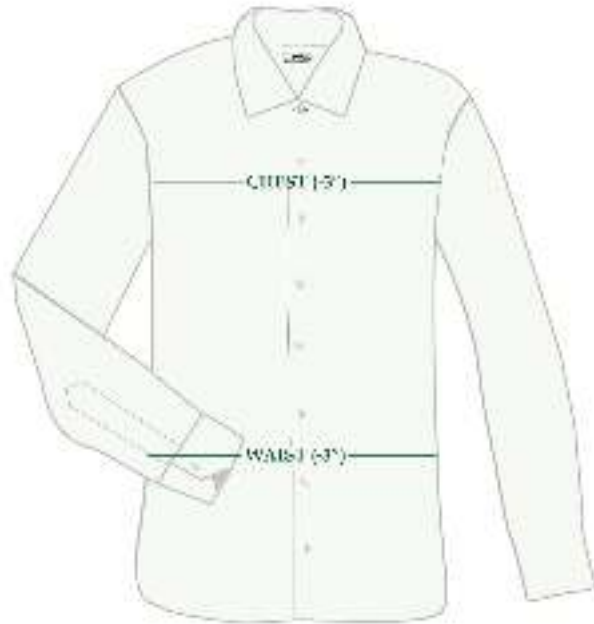


FINISHED BODY DIMENSIONS



REGULAR FIT BODY

	14 ^{1/2}	15	15 ^{1/2}	16	16 ^{1/2}	17	17 ^{1/2}	18	18 ^{1/2}	19	19 ^{1/2}	20	22
Body Length from C.B. Neck	30 ^{7/8}	31	32	32	32 ^{7/8}	32 ^{7/8}	33 ^{7/8}	33 ^{7/8}	33 ^{7/8}	34 ^{7/8}	34 ^{7/8}	34 ^{7/8}	35 ^{7/8}
Chest -1" Below Armhole	42	44	46	48	50	52	56	58	60	62	64	66	74
Waist -8" Below Armhole	40	42	44	46	48	50	54	56	58	60	62	64	72
Bottom Opening	42 ^{1/2}	44 ^{1/2}	46 ^{1/2}	48 ^{1/2}	50 ^{1/2}	52 ^{1/2}	56 ^{1/2}	58 ^{1/2}	60 ^{1/2}	62 ^{1/2}	64 ^{1/2}	66 ^{1/2}	74 ^{1/2}
Across Shoulder	18 ^{1/8}	18 ^{5/8}	19 ^{1/8}	19 ^{5/8}	20 ^{1/8}	20 ^{5/8}	21 ^{1/8}	22 ^{1/8}	22 ^{5/8}	23 ^{1/8}	23 ^{5/8}	24 ^{1/8}	26 ^{3/8}
Sleeve Length	All Sizes ^{1/2} " Over Stated Sleeve Length												



TAILORED FIT BODY (MX2)

	14 ^{1/2}	15	15 ^{1/2}	16	16 ^{1/2}	17	17 ^{1/2}	18	18 ^{1/2}	19	19 ^{1/2}	20	22
Body Length from C.B. Neck	30	30	31	31	31 ^{7/8}	31 ^{7/8}	32 ^{7/8}	32 ^{7/8}	32 ^{7/8}	32 ^{7/8}	34 ^{1/8}	34 ^{7/8}	35 ^{7/8}
Chest -1" Below Armhole	39	41	43	45	47	49	51	53	55	57	59	61	69
Waist -8" Below Armhole	37	39	41	43	45	47	49	51	53	55	57	59	67
Bottom Opening	40	42	44	46	48	50	52	54	56	58	60	62	70
Across Shoulder	18 ^{1/4}	18 ^{3/4}	19 ^{1/4}	19 ^{3/4}	20 ^{1/4}	20 ^{3/4}	21 ^{1/4}	21 ^{3/4}	22 ^{1/4}	22 ^{3/4}	23 ^{1/4}	23 ^{3/4}	25 ^{3/4}
Sleeve Length	All Sizes ^{1/2} " Over Stated Sleeve Length												

GITMAN SHIRTS

RETAIL PRICE LIST

PINPOINT

STYLE #	COLLAR	MSRP
112-10	BSU	\$145.00
112-40	BSU	\$145.00
112-78	BSU	\$155.00
112-61	BSU	\$155.00
112-62	BSU	\$155.00
110-10	M	\$145.00
110-40	M	\$145.00
110-10	CH	\$145.00
110-40	CH	\$145.00
110-10	MFC	\$145.00

BUTTON-DOWN

STYLE #	COLLAR	MSRP
102-10	BSU	\$155.00
102-40	BSU	\$155.00
119-40	BSU	\$165.00
209-41	BSU	\$165.00
054-41	BSU	\$165.00
219-20	BSU	\$175.00
219-40	BSU	\$175.00
214-27	BSU	\$175.00
252-73	BSU	\$175.00

CHARLES SPREAD

STYLE #	COLLAR	MSRP
210-41	CH	\$175.00
211-40	CH	\$175.00
211-61	CH	\$175.00
252-40	CH	\$175.00
253-40	CH	\$175.00
213-40	CH	\$189.00

WIDE SPREAD

STYLE #	COLLAR	MSRP
224-40	WSNT	\$175.00
223-42	WSNT	\$175.00
215-10	WSD	\$175.00
225-40	WSD	\$175.00

MX2 TAILORED FIT

STYLE #	COLLAR	MSRP
209-41	MX2	\$175.00
217-41	MX2	\$175.00
325-10	MX2	\$175.00
210-41	MX2	\$175.00
054-41	MX2	\$175.00
232-61	MX2	\$175.00
204-10	MX2	\$189.00
204-40	MX2	\$189.00

FORMAL

STYLE #	COLLAR	MSRP
222MXBB10	MX2	\$175.00
107-10	PFWB	\$175.00
129-10	FCH5	\$175.00
128-10	FMT	\$175.00

EXTENDED SIZES

STYLE #	COLLAR	MSRP
129-10	FCB5	\$200.00
129-10	FCT5	\$200.00
112-10	BSUB	\$169.00
112-40	BSUB	\$169.00
112-10	BSUT	\$169.00
112-40	BSUT	\$169.00
110-10	CHB	\$169.00
110-40	CHB	\$169.00
110-10	CHT	\$169.00
110-40	CHT	\$169.00

Gitman Shirts Customer Service

PH 800-526-3929, FX 800-972-3854
2309 Chestnut Street, Ashland, PA 17921

GITMAN SHIRTS

WHOLESALE PRICE LIST

PINPOINT

STYLE #	COLLAR	WHOLESALE	MSRP
112-10	BSU	\$57.50	\$145.00
112-40	BSU	\$57.50	\$145.00
112-78	BSU	\$62.00	\$155.00
112-61	BSU	\$62.00	\$155.00
112-62	BSU	\$62.00	\$155.00
110-10	M	\$57.50	\$145.00
110-40	M	\$57.50	\$145.00
110-10	CH	\$57.50	\$145.00
110-40	CH	\$57.50	\$145.00
110-10	MFC	\$62.00	\$155.00

BUTTON-DOWN

STYLE #	COLLAR	WHOLESALE	MSRP
102-10	BSU	\$62.00	\$155.00
102-40	BSU	\$62.00	\$155.00
119-40	BSU	\$65.00	\$165.00
209-41	BSU	\$65.00	\$165.00
054-41	BSU	\$65.00	\$165.00
219-20	BSU	\$70.00	\$175.00
219-40	BSU	\$70.00	\$175.00
214-27	BSU	\$70.00	\$175.00
252-73	BSU	\$70.00	\$175.00

CHARLES SPREAD

STYLE #	COLLAR	WHOLESALE	MSRP
210-41	CH	\$70.00	\$175.00
211-40	CH	\$70.00	\$175.00
211-61	CH	\$70.00	\$175.00
252-40	CH	\$70.00	\$175.00
253-40	CH	\$70.00	\$175.00
213-40	CH	\$75.00	\$189.00

WIDE SPREAD

STYLE #	COLLAR	WHOLESALE	MSRP
224-40	WSNT	\$70.00	\$175.00
223-42	WSNT	\$70.00	\$175.00
215-10	WSD	\$70.00	\$175.00
225-40	WSD	\$70.00	\$175.00

MX2 TAILORED FIT

STYLE #	COLLAR	WHOLESALE	MSRP
209-41	MX2	\$70.00	\$175.00
217-41	MX2	\$70.00	\$175.00
325-10	MX2	\$70.00	\$175.00
210-41	MX2	\$70.00	\$175.00
054-41	MX2	\$70.00	\$175.00
232-61	MX2	\$70.00	\$175.00
204-10	MX2	\$75.00	\$189.00
204-40	MX2	\$75.00	\$189.00

FORMAL

STYLE #	COLLAR	WHOLESALE	MSRP
222MXBB10	MX2	\$70.00	\$175.00
107-10	PFWB	\$70.00	\$175.00
129-10	FCH5	\$70.00	\$175.00
128-10	FMT	\$70.00	\$175.00

EXTENDED SIZES

STYLE #	COLLAR	WHOLESALE	MSRP
129-10	FCB5	\$80.00	\$200.00
129-10	FCT5	\$80.00	\$200.00
112-10	BSUB	\$67.50	\$169.00
112-40	BSUB	\$67.50	\$169.00
112-10	BSUT	\$67.50	\$169.00
112-40	BSUT	\$67.50	\$169.00
110-10	CHB	\$67.50	\$169.00
110-40	CHB	\$67.50	\$169.00
110-10	CHT	\$67.50	\$169.00
110-40	CHT	\$67.50	\$169.00

Gitman Shirts Customer Service

PH 800-526-3929, FX 800-972-3854
2309 Chestnut Street, Ashland, PA 17921